

OPERATORS' GUIDE

REL-6TN-M

6.2 TON MANUAL HYDRAULIC
CRIMPING TOOL



Compatible with Kearney,
Burndy "W" type, and RELIABLE
6 ton compression dies.

WARNING



All information found in this guide must be read and understood before use or testing of this tool.

Failure to read and understand these warnings and safe handling instructions could result in severe personal injury and or death.

RELIABLE EQUIPMENT & SERVICE CO., INC.

92 Steamwhistle Drive • Ivyland, PA 18974 • USA
Phone: 215-357-3500 • Fax: 215-357-9193

MODEL: _____

MAX. PRESSURE: _____

SERIAL NO.: _____

YEAR: _____

NOTICE

Sizes, weights and tool specifications listed in this manual are subject to change without notice. Please consult factory for information and updates.



RELIABLE EQUIPMENT & SERVICE CO., INC.

DISTRIBUTED BY

REGISTRATION

UPON RECEIPT OF THIS TOOL, COMPLETE THE REGISTRATION BELOW.

COMPANY _____

ADDRESS _____

PHONE _____ FAX _____

SERIAL NUMBER _____

DATE OF PURCHASE _____

DEALER NAME _____



CAUTION

The information in this manual is intended to guide the user in the use and application of this tool. It is not intended as a substitute for proper training and experience in safe work practices for this type of equipment.

Consult your supervisor or safety personnel if you have any questions regarding the safe operation of this tool.

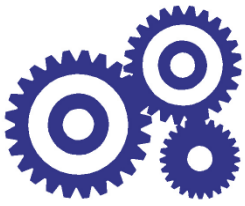
TABLE OF CONTENTS

DISTRIBUTOR INFORMATION.....	3
REGISTRATION	3
TABLE OF CONTENTS.....	4
TOOL SPECIFICATIONS	
REL-6TN-M - MANUAL HYDRAULIC 6.2 TON COMPRESSION TOOL.....	5
SAFETY INFORMATION AND WARNINGS.....	6-8
OPERATING INSTRUCTIONS	8-9
DIE REFERENCE CHARTS.....	10
DAILY MAINTENANCE	11
GENERAL MAINTENANCE.....	11
LABEL SET	12
MAINTENANCE RECORDS	16
CONTACT INFORMATION.....	16

If you have any questions regarding the information found in this manual please contact RELIABLE EQUIPMENT at 800-966-3530 or FAX 215-357-9193.



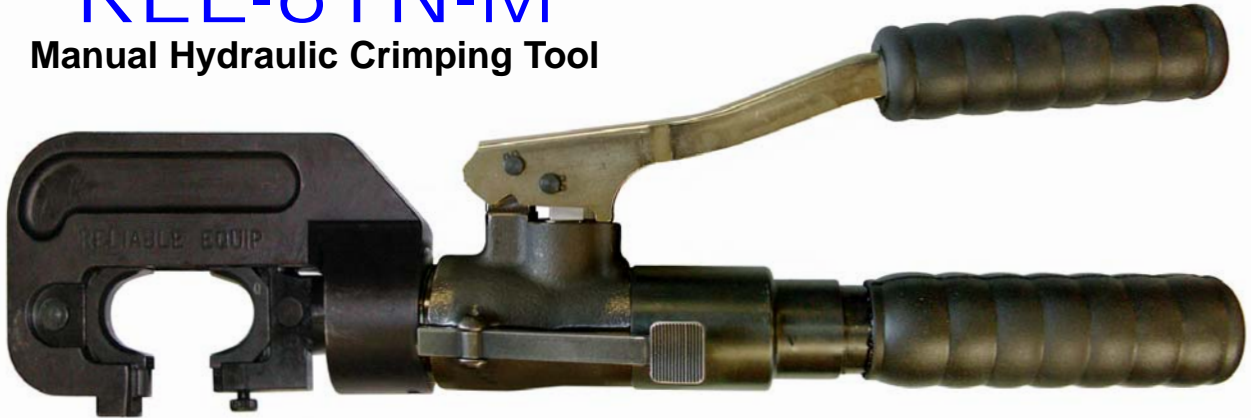
THIS SYMBOL INDICATES ITEMS OF EXTREME IMPORTANCE.
Safety of user and others may be in jeopardy if these instructions are not read and understood.



RELIABLE EQUIPMENT & SERVICE CO., INC.

REL-6TN-M

Manual Hydraulic Crimping Tool



Accepts Kearney type and "W" type 6 ton dies

SPECIFICATIONS

OUTPUT	6.6 ton
LENGTH:	16.8 inches
WEIGHT	8.25 lbs.

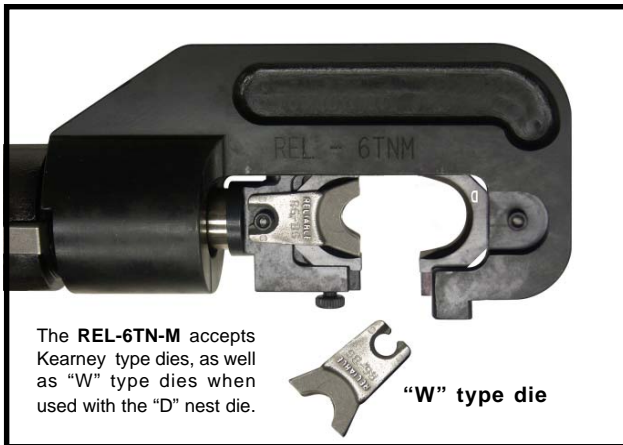
Connector Range

JAW	.950 inches
LUGS	#6-500 MCM Cu
SPLICES	#6-500 MCM Al
H-TAPS	4/0 - 4/0

REL-6TN-M Service Entrance Crimper

This versatile manual compression tool is will make service entrance connections up to 4/0 quick and easy.

This model features a two-stage advance piston. The first stage brings the crimp to the connector quickly, while the second stage provides the power to make the connection. The 180° swivel head permits simple tool positioning, and usability in confined areas. A pressure release lever allows the jaw to retract quickly. A magnetic oil reservoir plug traps metal contaminants.



The REL-6TN-M accepts Kearney type dies, as well as "W" type dies when used with the "D" nest die.



92 Steamwhistle Drive • Ivyland, PA 18974
Phone: 800-966-3530 • Fax: 215-357-9193
Visit us on the web at www.Reliable-Equip.com



WARNING

BEFORE USING THIS TOOL, READ THE WARNINGS and the recommended practices described in this manual. Failure by the operator to read and fully understand these warnings will leave this person unqualified to use and operate this tool. Property damage, severe personal injury, and/or death could result by not following these warnings.

These warnings will appear in appropriate locations when they are pertinent to the particular subject being shown. Read each one carefully and follow them strictly.



Eye Protection

WARNING

Always wear eye protection to avoid injury from flying debris or hydraulic oil leaks. Failure to do so can result in serious personal injury.



Skin Irritation

WARNING

Hydraulic oil may cause irritation. Use care to prevent contact with skin. In case of accidental contact, wash affected area immediately



Hard Hat

WARNING

Always wear a hard hat to avoid injury from falling debris. Failure to do so can result in serious personal injury.



Foot Protection

WARNING

Always wear foot protection. Failure to do so can result in serious personal injury.



Hearing Protection

WARNING

Always wear hearing protection, to avoid hearing loss due to long term exposure to high noise levels.



Protective Gloves

WARNING

Always wear protective gloves Failure to do so can result in serious personal injury.



COMPRESSION DANGER

This manual hydraulic crimping tool can injure and/or disable.
KEEP ALL PARTS OF THE BODY AWAY FROM MOVING PARTS.

WARNING

Failure to observe this warning could result in serious injury



ELECTRICAL SHOCK HAZARD

Always wear and use the necessary clothing, equipment and safety practices to protect against electrical shock. Failure to follow these rules can result in serious personal injury or death.

WARNING



GENERAL SAFETY



USE ALL APPROPRIATE AND APPLICABLE PERSONAL SAFETY EQUIPMENT as required by the operating company.

INSPECT TOOL BEFORE USE. Replace any worn, damaged or missing parts. A damaged or improperly assembled tool may injure operator and/or nearby personnel.

KEEP ALL PARTS OF THE BODY AWAY from moving parts of the tool.

KEEP HANDS OUT FROM BETWEEN CRIMPING NODES AT TOOL HEAD.

ALL BODY PARTS SHOULD BE OUTSIDE DANGER ZONE PRIOR TO COMPRESSION.

MAKE SURE there is no person in close proximity to you or the tool who could be injured by any operation being performed, tool malfunction or flying debris.

DO NOT OVEREXTEND your position by overreaching or unbalancing the footing necessary to maintain physical control of your body and the tool.

ALWAYS MAINTAIN a firm grip on the tool to avoid loss of control during an operation, causing property damage, serious injury or death.

USE THIS TOOL FOR THE MANUFACTURERS' INTENDED PURPOSE ONLY.

OBSERVE CLOSELY ALL OF THE SAFETY RULES FOR A PARTICULAR JOB CLASS

Operation/Safety methods may vary in accordance with the working guidelines established by each utility or contractor. Ensure that you fully comply with all safe operation guidelines required by your employer.

**FAILURE TO HEED THESE WARNINGS COULD RESULT IN
PROPERTY DAMAGE, SERIOUS PERSONAL INJURY OR DEATH.**



WARNING

FIRE HAZARD

An incomplete crimp may pose a fire hazard.
Always use the appropriate connector, die set, and compression tool, as required by the intended application. Compression tool should be tested on a regular schedule to ensure accurate compression.
Failure to observe this warning could result in serious injury.

OPERATION

Read entire manual prior to using this tool.

(Refer to all safety recommendations and warnings)

Observe all safety precautions and procedures required by the operating company. (Also refer to SAFETY information found on pages 6 through 8)

Before crimping, ensure that crimp is within the capacity listed for the tool.

Refer to connector manufacturer's instructions for cable preparation and crimping procedure.

Ensure that you are using the proper die, as recommended by the connector manufacturer.

1. Insert proper die into die seat. Refer to appropriate **DIE INSTALLATION** on next page.
2. Place tool over connector. Center connector between the dies.
3. Align jaw as necessary to ensure proper crimp. Position subject at a 90° angle to the tool.
4. Pump handle to advance dies up to subject. Check tool alignment.

NOTE: Jaw may be released as needed at any point in the crimp cycle.

5. Pump handles until tool pressure builds up and "pop off" is felt. Full crimping pressure has been obtained.
6. Allow die jaws to retract completely by pressing hydraulic release lever.
7. Repeat procedure as required by compression sleeve, connector manufacturer, or regulating authority.
8. Visually inspect crimp for correctness.

Manufacturer recommends regular testing for proper pressure and operation.
Test at least every 6 (six) months, test more often under heavy usage.

IF YOU HAVE ANY QUESTIONS REGARDING THE PROPER USE AND/OR OPERATION OF THIS TOOL, CONSULT YOUR AREA SUPERVISOR, OR CONTACT RELIABLE EQUIPMENT AT 800-966-3530

DIE INSTALLATION

Observe safety precautions and procedures required by the operating company.

Ensure that you are using the proper die, as recommended by the connector manufacturer.

Ensure specified die is within the capacity of the tool.

INSERT KEARNEY STYLE DIE INTO JAW

Open tool jaw completely.

Slide the die into die seat. (Illustration B)

Tighten thumb screws to secure die.

Check to ensure die is securely seated.

Repeat steps above for opposing die half.

INSERT "W" STYLE DIE WITH D3 ADAPTER

Open tool jaw completely.

Slide the Kearney D3 die adapter into the jaw. (Illustration B) Ensure die is securely seated.

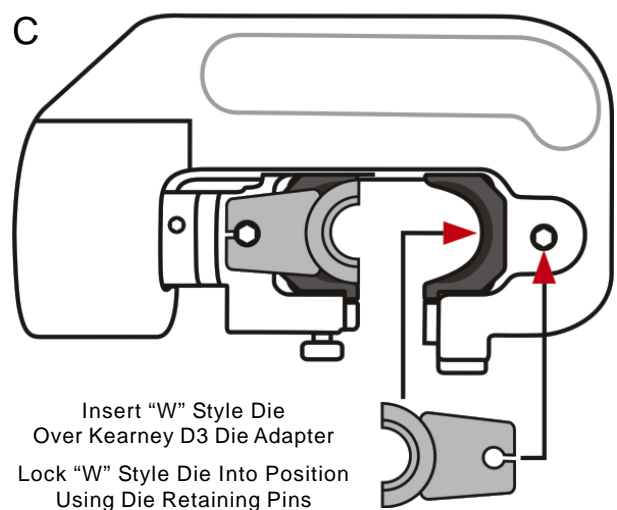
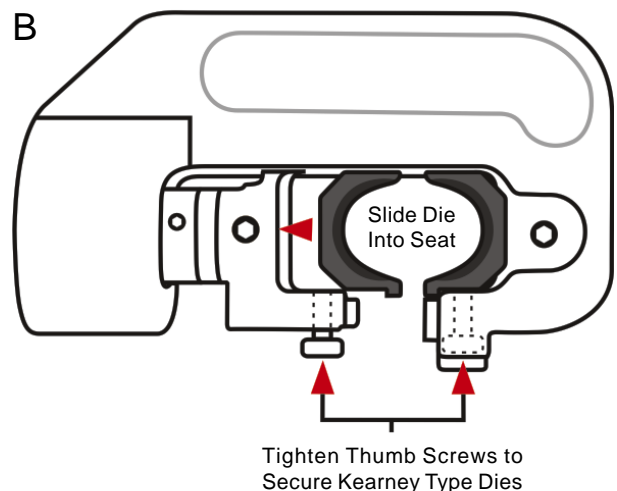
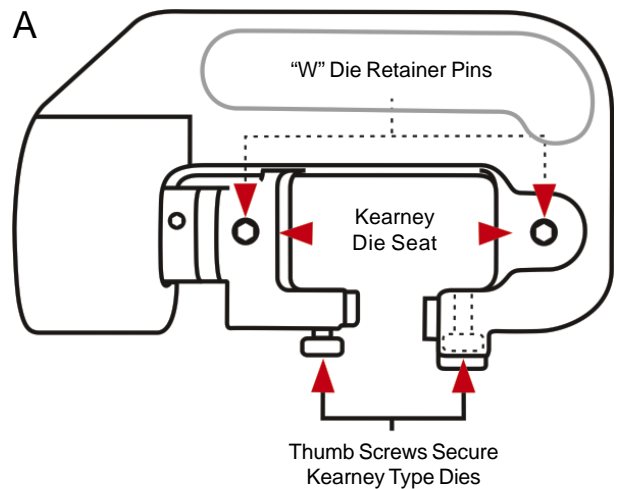
Push down on die retainer pin. (Illustration C)

Slide die half into die seat and on the die pin.

Release retainer pin.

Check to ensure die is securely seated.

Repeat steps above for opposing die half.



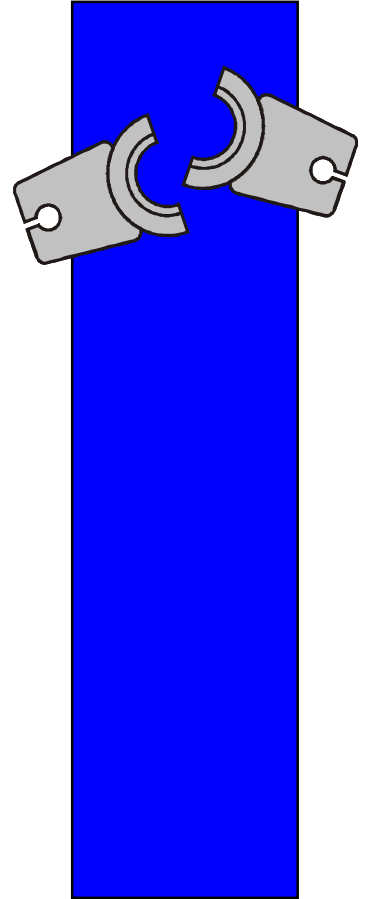
Refer to die selection/reference chart on next page for dies available from Kearney, Burndy, and RELIABLE EQUIPMENT.

RELIABLE R6 SERIES

6 TON DIES EQUIV. TO BURNDY "W" STYLE

RELIABLE	BURNDY
R6-BG	WBG
R6-C	WC
R6-K840	WK840
R6-L	WL
R6-O	WO
R6-Q	WQ
R6-161	W161
R6-162	W162
R6-163	W163
R6-164	W164
R6-165	W165
R6-167	W167
R6-171	W171
R6-236	W236
R6-237	W237
R6-238	W238
R6-239	W239
R6-240	W240

RELIABLE	BURNDY
R6-241	W241
R6-242	W242
R6-243	W243
R6-245	W245
R6-247	W247
R6-248	W248
R6-249	W249
R6-251	W251
R6-660	W660
R6-687	W687
R6-690	W690
R6-691	W691
R6-693	W693
R6-694	W694
R6-702	W702
R6-733	W733
R6-CUT	W28K

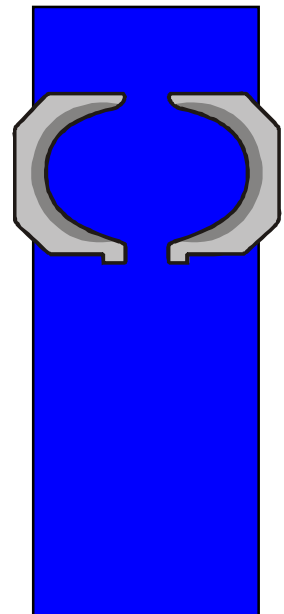


RELIABLE R6K SERIES

6 TON DIES EQUIV. TO KEARNEY "O" STYLE

RELIABLE	KEARNEY
R6K-B	B
R6K-D	D
R6K-J	J
R6K-K	K
R6K-O	O
R6K-P	P
R6K-T	T
R6K-737	737
R6K-781	781
R6K-840	840
R6K-3/16	3/16
R6K-1/4	1/4

RELIABLE	KEARNEY
R6K-5/16	5/16
R6K-3/8	3/8
R6K-1/2	1/2
R6K-9/16	9/16
R6K-19/32	19/32
R6K-5/8-1	5/8-1
R6K-11/16	11/16
R6K-D3	D3
R6K-510H	510-HEX
R6K-635H	635-HEX
R6K-747H	747-HEX



DAILY MAINTENANCE

The life, reliability, and safety of the tool is dependent on proper use and maintenance.

STORE THE TOOL PROPERLY . . . Before storing tools release pressure so that the crimping jaw fully retract. This protects the operating ram from moisture and condensation.

NOTE: When the tool has been stored for extended period of non-use, the tools should be activated approximately every 3 weeks to keep o-rings and seals lubricated. Clean and inspect all surfaces including head, pump mechanism, ram, body.

WARNING: Head and/or handles may cut or pinch. Please use extreme caution. Worn or damaged parts may malfunction during operation, causing more extensive damage to the tool and/or severe injury to the operator or bystander.

All parts must be replaced with new parts if signs of wear or damage are evident.

Check relief valve pressure setting regularly.

Valve should be adjusted or replaced by a trained technician if necessary.

DO NOT MAKE ADJUSTMENTS TO THE TOOL . . . There are no adjustments on this tool which can be made in the field. If a tool becomes inoperative and the instructions in this booklet do not correct the malfunction have the tool serviced by RELIABLE EQUIPMENT or an authorized service provider.

Keep Label Set clean and legible. Replace decals when necessary.

GENERAL MAINTENANCE

This tool requires well-trained experienced personnel for major repairs, adjustments or maintenance. **Complete disassembly is not recommended. Return the unit to an authorized dealer for total disassembly and/or repair.** It is suggested that tools requiring repairs be returned to Reliable Equipment for correction unless overall local conditions are adequate and service training has been provided. Reliable Equipment is set up to provide quick maintenance and overhaul service. Contact your Reliable Equipment representative if service is required.

All maintenance or disassembly should take place on a flat, clean work surface covered with towels or wipers so as to have a clean space for the disassembled parts.

Inspect each part during disassembly for wear, scratches, and cuts. Discard the worn or damaged parts and replace with new factory authorized parts.

O-rings are sensitive to sharp edges. Inspect closely for cuts or damage. A small cut will cause a leak. When assembling or disassembling O-rings, use hydraulic fluid as a lubricant to help disassembly or installation.

NOTICE: When disposing of hydraulic fluid, parts or components observe all federal, state, and local guidelines.

IF YOU HAVE QUESTIONS REGARDING THE REPAIR AND MAINTENANCE OF THIS TOOL CONTACT RELIABLE EQUIPMENT OR YOUR RELIABLE EQUIPMENT REPRESENTATIVE.



WARNING

Inspection & Testing requirements may vary in accordance with the working guidelines established by each utility or contractor. For your own safety, ensure that you fully comply with all safe operation guidelines required by your employer.

NOTE: Keep Label Set clean and legible. Replace decals when necessary.



WARNING

BEFORE USING THIS PRODUCT READ THE SAFETY WARNINGS and recommended practices described in the manual. Failure by the operator to read and fully understand the warnings will leave this person unqualified to use and operate the tool.

Failure to observe all warnings and instructions could result in property damage, severe personal injury, and/or death.



WARNING

KEEP BODY PARTS OUT OF COMPRESSION ZONE

CAUTION

Operation and safety methods may vary in accordance with the guidelines established by each utility. For your safety, ensure that you fully comply with all safe operation guidelines established by your respective power utility. REL-SM

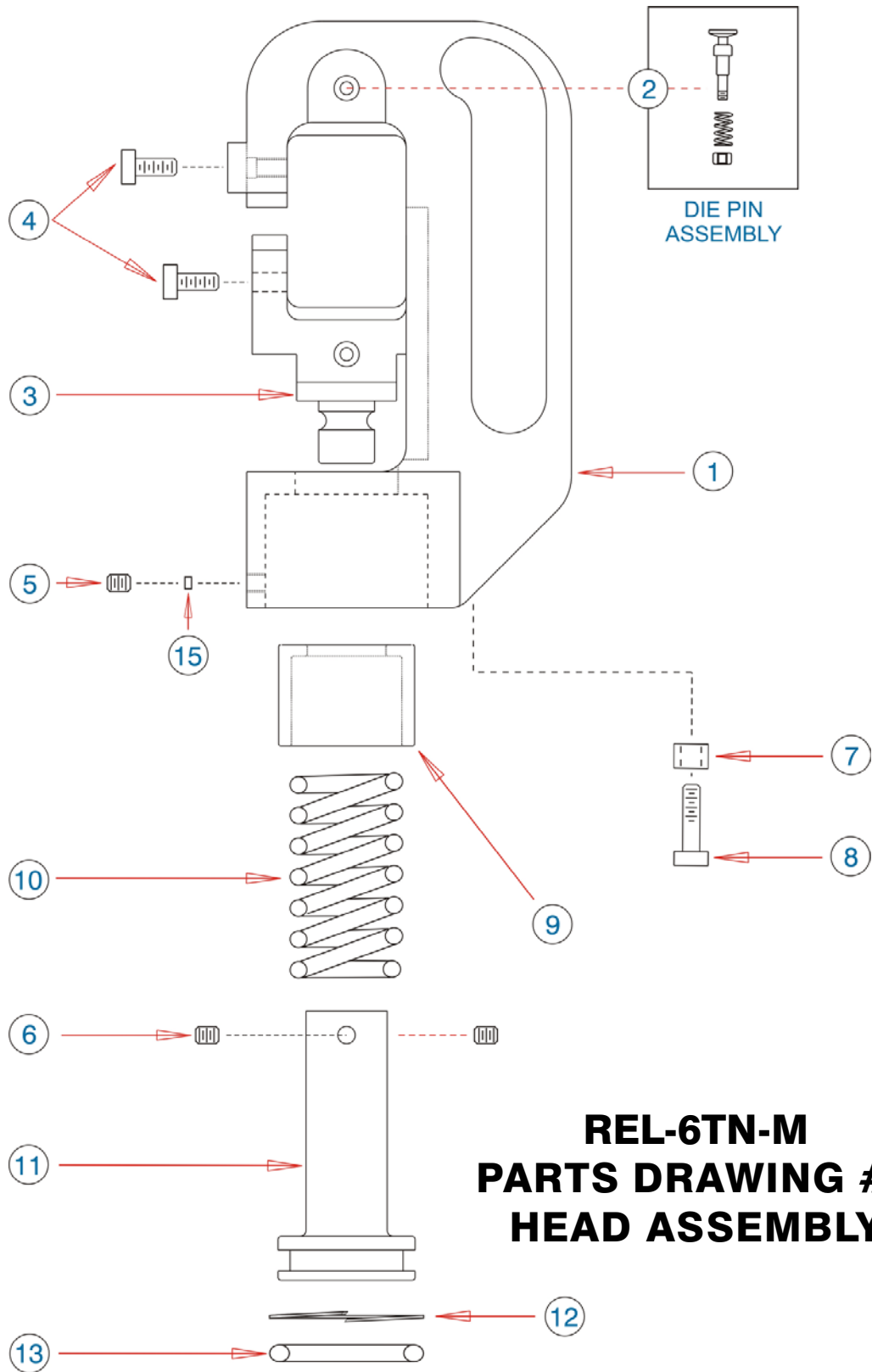
DANGER



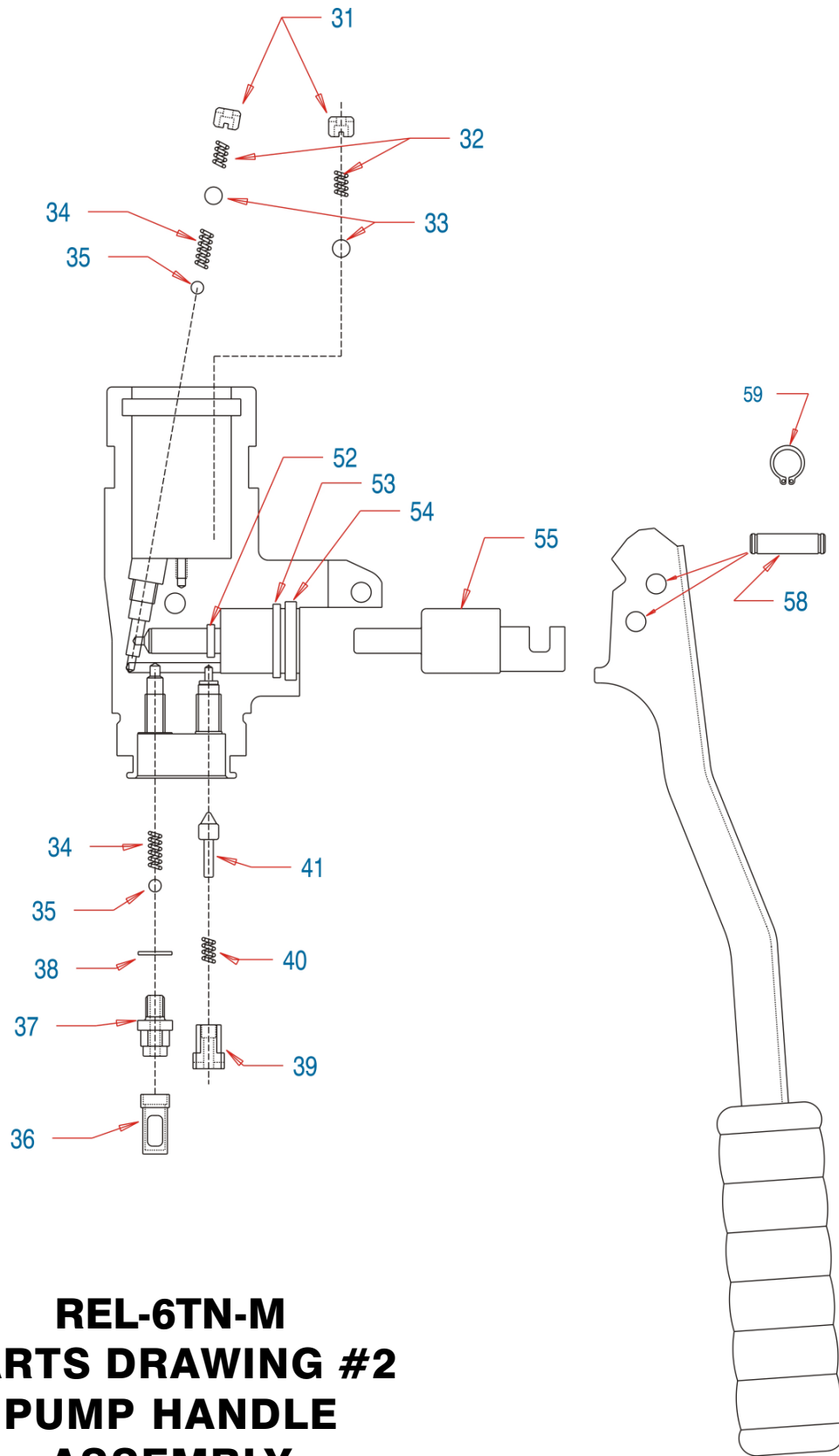
The user should be properly trained in the correct procedures required for work on or around electrical lines.

CAUTION

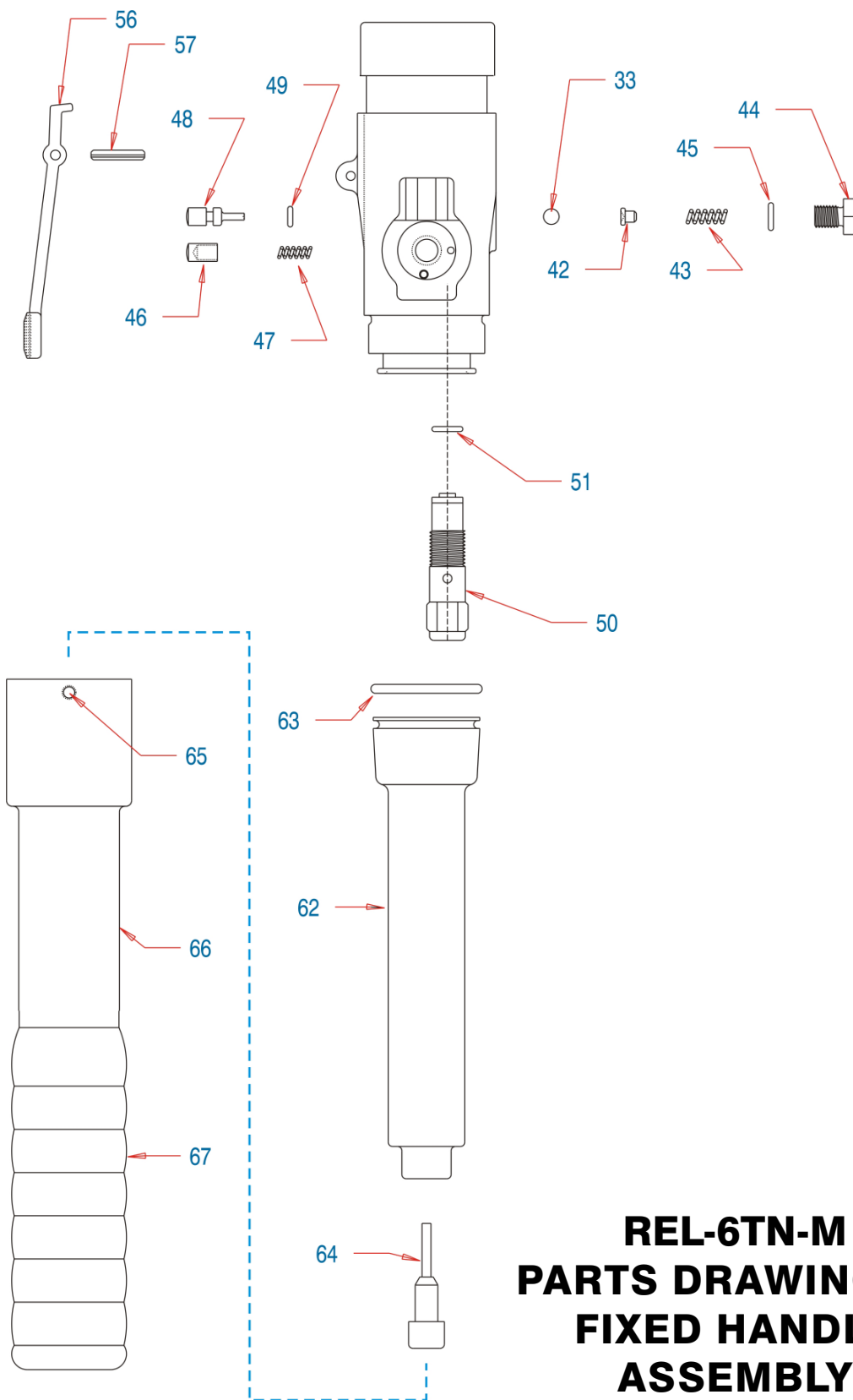
Do not operate without dies.



REL-6TN-M
PARTS DRAWING #1
HEAD ASSEMBLY



**REL-6TN-M
PARTS DRAWING #2
PUMP HANDLE
ASSEMBLY**



REL-6TN-M
PARTS DRAWING #3
FIXED HANDLE
ASSEMBLY

REL-6TN-M

MANUAL HYDRAULIC 6 TON COMPRESSION TOOL PARTS

Drawing #1 - Head Assembly

1	R32201	HEAD	1
2	K2854	DIE RELEASE PIN ASSEMBLY	1
3	R32202	6 TON DIE CRADLE	1
4	R32203	KNURLED SCREW	2
5	R32204	SET SCREW (HEAD)	1
6	R43206	SET SCREW (RAM)	2
7	R43207	SPACER	1
8	R43105	STOP SCREW	1
9	R36010	GUIDE RING	1
10	R36009	SPRING	1
11	R43102	RAM	1
12	R41012	BACK-UP RING	1
13	R41013	O-RING	1
14			
15	R43115	PLASTIC DOT	1

Please consult RELIABLE EQUIPMENT with any parts questions.

Drawing #2 - Pump Handle

30	R41101	BODY	1
31	R36038	POSITIONING SCREW	2
32	R36036	SPRING	2
33	R36041	7/32 BALL	2
34	R36033	SPRING	2
35	R36032	5/32 BALL	2
36	R36055	FILTER	1
37	R36054	INLET CHECK BODY	1
38	R36053	COPPER WASHER	1
39	R36050	FAST ADVANCE SCREW	1
40	R36052	SPRING	1
41	R36051	FAST ADVANCE PINTLE	1
52	R36059	O-RING	1
53	R36060	O-RING	1
54	R36037	WIPER	1
55	R36018	INJECTOR	1
58	R36019	PIN	2
59	R36020	C-CLIP	4

Drawing #3 - Fixed Handle

33	R36041	7/32 BALL	2
42	R36042	BALL SUPPORT	1
43	R36043	SPRING	1
44	R36044	BOLT	1
45	R36045	O-RING	1
46	R36046	PIN	1
47	R36047	SPRING	1
48	R36039	PRESSURE RELEASE PIN	1
49	R18013	O-RING	1
50	R36034	RELIEF VALVE	1
51	R18208	O-RING	1
56	R41104	LEVER	1
57	R36031	SPRING PIN	1

60	R36021	PUMP HANDLE	1
61	R36023	SMALL GRIP	1
62	R36024	OIL RESERVOIR	1
63	R36025	O-RING	1
64	R18026	PLUG WITH MAGNET	1
65	R36058	SET SCREW	1
66	R36027	LARGE HANDLE	1
67	R36022	LARGE GRIP	1
-	-	-	-

COMPLETE SEAL KIT			



92 Steamwhistle Drive • Ivyland, PA 18974
Phone: 800-966-3530 • Fax: 215-357-9193
Visit us on the web at www.Reliable-Equip.com

