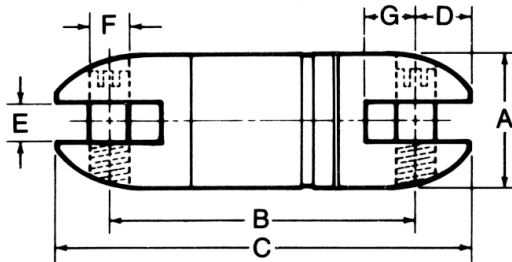
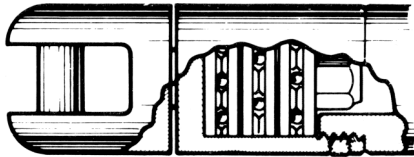
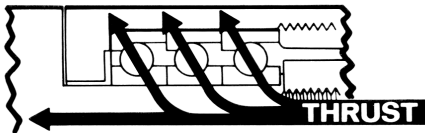
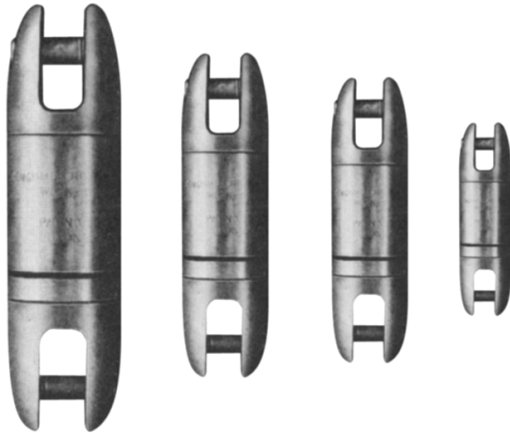




Tooling solutions for the power utility industry.



LINE STRINGING SWIVELS

The combined experience of TSE-Pengo in conductor stringing equipment and Miller in swivel design and production allows us to offer these reliable, heavy duty, line stringing swivels that go where the line goes without damage.

These swivels perform better and last longer because the component parts are precision machined from alloy steel, heat treated for strength and wear, swivel on angular contact ball bearings to transfer the thrust load from the shank to the barrel, lubricated with high viscosity wide temperature range grease, and sealed with molded neoprene grease seals with stainless steel spring retainers. External parts are cadmium plated. All parts are replaceable.

Swivels are designed for straight line pulling and will not carry side loads such as those that would be encountered while wrapped around a bullwheel.

Swivel selection should be governed by pulling line diameter, grip size, opening dimensions, pin sizes, working load and sheave groove diameter.

MODEL	Load lbs.**	A	B	C	D	E***	F	G	Weight	Allen Wrench*
A-13-L	1,800	7/8"	2-3/8"	3-1/8"	3/8"	5/16"	5/16"	13/32"	6 oz.	5/32"
BB-13-L	4,000	1-1/4"	3-21/32"	4-11/32"	7/16"	19/32"	3/8"	11/16"	18 oz.	3/16"
B-13-L	7,500	1-5/8"	4"	5-3/16"	9/16"	9/16"	7/16"	13/16"	29 oz.	7/32"
C-13-L	10,000	1-7/8"	5-7/16"	7-1/16"	13/16"	3/4"	5/8"	15/16"	62 oz.	5/16"
D-13-L	16,000	2-1/2"	7-7/8"	10-1/8"	1-1/8"	1"	7/8"	1-9/16"	128 oz.	1/2"
EE-13-L	25,000	2-7/8"	9-13/16"	12-5/16"	1-1/4"	1-9/32"	1"	2-1/8"	232 oz.	9/16"
D-13-4BL	30,000	2-1/2"	8-29/32"	11-5/32"	1-1/8"	1"	7/8"	1-9/16"	144 oz.	1/2"
GG-13-L	50,000	4"	13-1/4"	16-3/4"	1-3/4"	1-3/4"	1-1/2"	3-1/4"	640 oz.	3/4"
HH-13-L	100,000	5"	15-29/32"	20-21/32"	2-3/8"	2"	2"	3-11/16"	1,344 oz.	—

* Denotes size of Allen Wrench for use on Swivel Pin.

** Based on safety factor of 3.

*** The dimension of the clevis opening (e) determines the size of the rope which will fit the swivel.

TO ORDER CALL: 800-966-3530 OR FAX: 215-357-9193